

DORA 32B DD BOILER STOVE – TECH. DATA

Wood pellet stove with integrated back boiler

Average Thermal Heat Input (Min – Max):	8.95 – 32.41kW
Performance Efficiency (Min – Max):	94.03 – 95.79%
Nominal Overall Power Yield (Min – Max):	8.57 – 30.48kW
Power Delivered To Water (Min – Max):	6.51 – 24.38kW
Power Delivered To Room (Min – Max):	2.06 – 6.1kW
Approx. Heating Capacity – Poor Insulation:	140 – 490m ³
Approx. Heating Capacity – Good Insulation:	410 – 1,465m ³
Pellet Consumption (Min – Max):	1.8 – 6.3kg/hr
Pellet Tank Capacity:	57kg
Approx. burn time (Min – Max):	9.5 – 30hrs
Flue Outlet Diameter:	100mm
Electrical Requirement (working):	165W
Electrical Requirement (starting):	430W
Net Weight:	280kg
Dimensions (H x W x D):	1,360 x 705 x 740mm

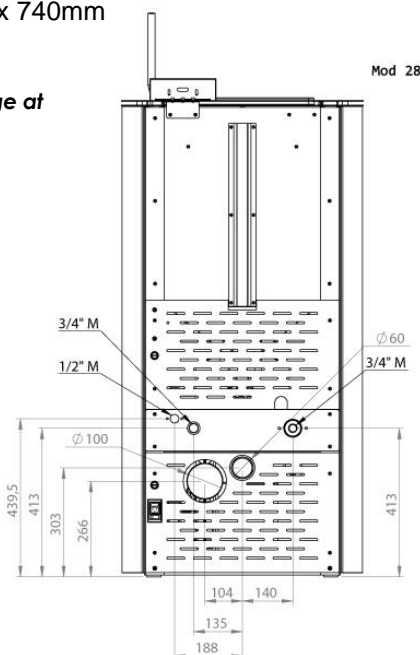


Specifications & products may differ from those shown and may change at anytime & without notice. E & OE



- Available in a selection of colours:
White or red with black door and top
- Double door
- Self-cleaning grate available (optional)

Your trusted local dealer:



EN 14785



15a B-VG

