

NADIA 24B BOILER STOVE – TECH. DATA

Wood pellet stove with integrated back boiler

Average Thermal Heat Input (Min – Max):	5.26 – 23.12kW
Performance Efficiency (Min – Max):	94.98 – 96.71%
Nominal Overall Power Yield (Min – Max):	5.08 – 21.96kW
Power Delivered To Water (Min – Max):	4.2 – 17.86kW
Power Delivered To Room (Min – Max):	0.88 – 4.9kW
Approx. Heating Capacity – Poor Insulation:	80 – 360m ²
Approx. Heating Capacity – Good Insulation:	240 – 1,100m ²
Pellet Consumption (Min – Max):	1.11 – 4.9kg/hr
Pellet Tank Capacity:	42kg
Approx. burn time (Min – Max):	9 – 37hrs
Flue Outlet Diameter:	80mm
Electrical Requirement (working):	140W
Electrical Requirement (starting):	350W
Net Weight:	230kg
Dimensions (H x W x D):	1,310 x 580 x 685mm

Specifications & products may change at any time & without notice

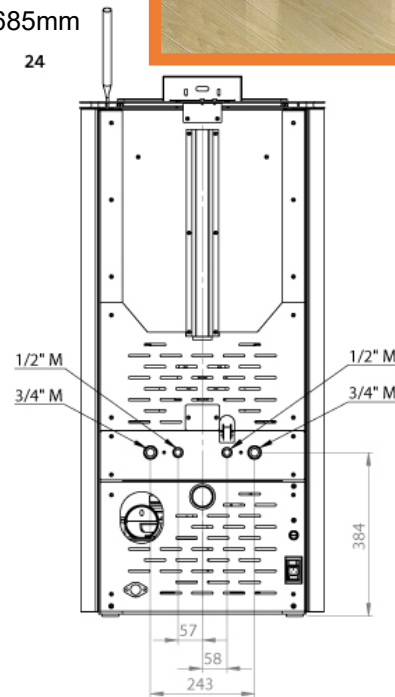


24



Available in a selection of colours:
bordeaux, white or black with dark grey trim

Your trusted local dealer:



EN 14785



15a B-VG

