

## FUTURA 11 AIR STOVE – TECHNICAL DATA

### Wood pellet stove for space heat only

Average Thermal Heat Input (Min - Max):	3.9 - 11.8kW
Performance Efficiency (Min - Max):	94.2 - <b>95%</b>
Nominal Overall Power Yield (Min - Max):	3.70 – 11.0kW
Approx. Heating Capacity - Poor Insulation:	60m <sup>3</sup> - 175m <sup>3</sup>
Approx. Heating Capacity - Good Insulation:	175m <sup>3</sup> - 530m <sup>3</sup>
Pellet Consumption (Min - Max):	0.8 - 2.45kg/hr
Pellet Tank Capacity:	16kg
Approx. burn time (Min - Max):	6 - 20hrs
Flue Outlet Diameter:	80mm
Electrical Requirement (Normal):	58W
Electrical Requirement (Starting):	300W
Net Weight:	100kg
Approx. dimensions (H x W x D):	1,010 x 475 x 490 mm



**NB: Specifications & products are indicative only, may differ from those shown and may change at any time & without notice. E & OE.**



Available in a selection of colours: black, red & white

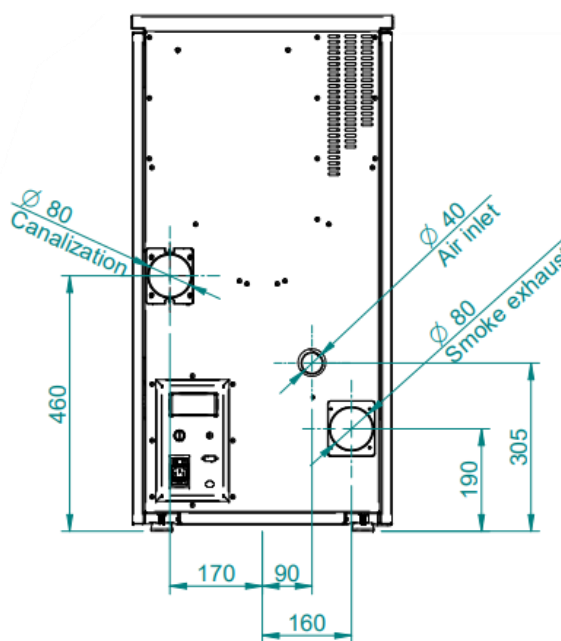


Wi-Fi



PDA

- ✓ Double door
- ✓ Exceptionally low noise levels
- ✓ Highly efficient at 95%
- ✓ Personal Digital Assistant
- ✓ Anti-explosion



Your trusted local dealer



Swiss Cantonal Association for Fire Safety



German Organisation for the Development of Bioenergy



Conformity Label

**EN 14785**

European Standard for Heating Appliances



Precisely Right

15a B-VG

Certification for Protection & Safety Regulations



Scandinavian Independent Research Body



Sustainable Energy Authority of Ireland

